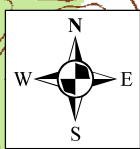


Subject Property

USGS Quadrangle
Fleming Island
Township 5 South
Range 26 East
Section 46



1 inch = 1,500 feet

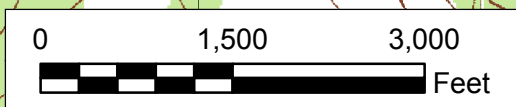
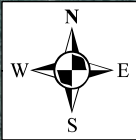
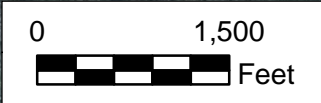


Figure 1
Topographic Site Location
Cross Creek Property
Green Cove Springs,
Clay County, Florida
2015-019 September 14, 2016

LG² ENVIRONMENTAL SOLUTIONS, INC.
14785 Old St. Augustine Road, Suite 4
Jacksonville, Florida 32258
(904) 288-8631



1 inch = 1,500 feet



Subject Property

- 01 - ALBANY FINE SAND, 0 TO 5 PERCENT SLOPES
- 02 - BLANTON FINE SAND, 0 TO 5 PERCENT SLOPES
- 03 - HURRICANE FINE SAND, 0 TO 5 PERCENT SLOPES
- 06 - MANDARIN FINE SAND
- 08 - SAPELO FINE SAND
- 10 - ORTEGA FINE SAND, 0 TO 5 PERCENT SLOPES
- 12 - SURRENCY FINE SAND, DEPRESSIONAL
- 13 - MEGGETT FINE SANDY LOAM
- 20 - SCRANTON FINE SAND
- 21 - GOLDHEAD FINE SAND
- 22 - PELHAM FINE SAND
- 29 - RUTLEGE-OSIER COMPLEX, FREQUENTLY FLOODED
- 31 - POTTSBURG FINE SAND
- 32 - BLANTON FINE SAND, 5 TO 8 PERCENT SLOPES
- 37 - RIDGEWOOD FINE SAND, 5 TO 8 PERCENT SLOPES
- 39 - MEADOWBROOK SAND, FREQUENTLY FLOODED
- 47 - NEWNAN FINE SAND
- 65 - MEADOWBROOK SAND

2014 True Color Orthophotos From Florida DOT

ENVIRONMENTAL SOLUTIONS, INC.
14785 Old St. Augustine Road, Suite 4
Jacksonville, Florida 32258
(904) 288-8631

Figure 2

Soils
2014 True Color Orthophoto
Cross Creek Property
Green Cove Springs,
Clay County, Florida

2015-019 September 14, 2016

Cross Creek

Clay County, Florida

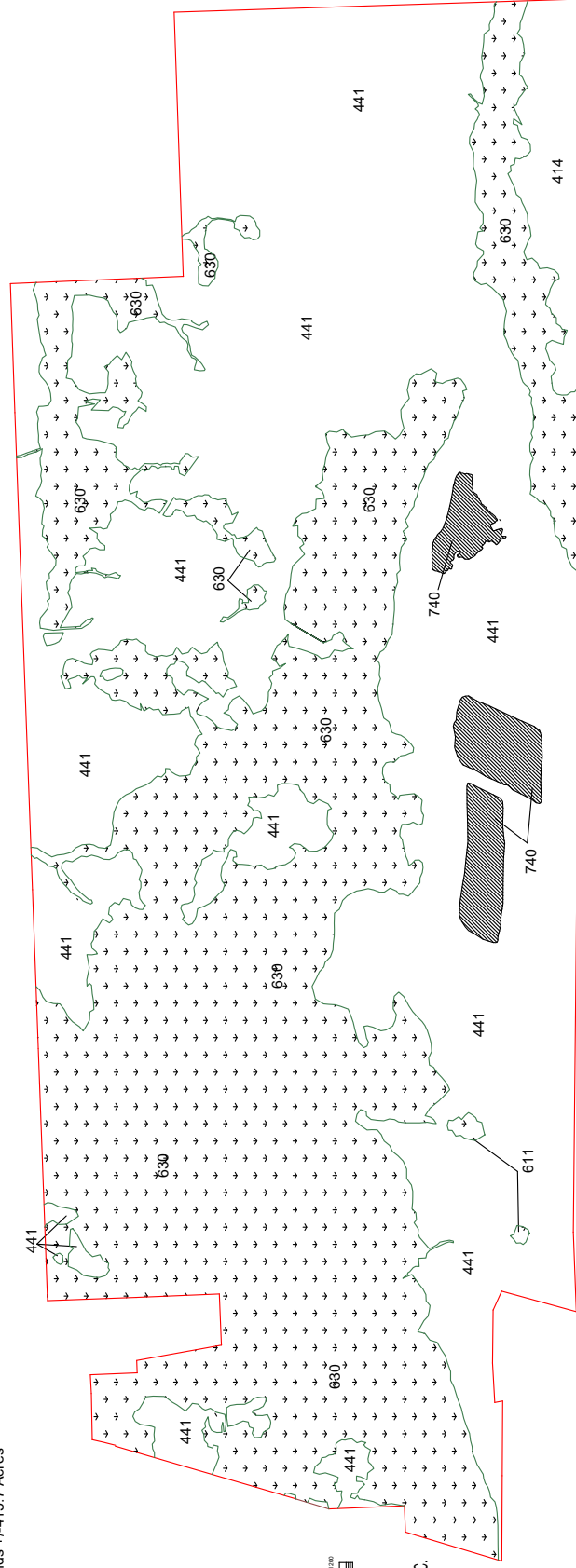
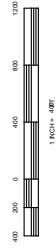
Figure 3

Proposed Site Conditions

- On-Site Jurisdictional Wetlands +/-415.7 Acres
- Borrow Pits +/-19.91 Acres

ELUCES Code


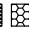

- 414Pine-Mesic Oak
- 441Pine Plantation
- 611Bay Swamp
- 630Wetland Forested Mixed
- 740Borrow Pit



Cross Creek
Clay County, Florida

Figure 4

Proposed Site Conditions

-  Proposed Wetland Impacts +/-4.83 Acres
-  Proposed Borrow Pit Impacts +/-19.91 Acres
-  Wetlands to Remain +/-410.9 Acres

